

## Emigre Fonts

Thank you for your font purchase!

To protect your investment, please make sure your registration is complete.

### Registration

Registered owners receive free technical support for 60 days. You are automatically registered when purchasing fonts directly from Emigre. When purchasing from a dealer, send us the registration form within 30 days of purchase, or register your Emigre fonts online at: <http://www.emigre.com/fontreg>

Please inform us if you have a change of address so that we may keep you current on any upgrades. Technical support line: (916) 451-4344.

### Font Installation

Before installation, it is best to lock master disks to ensure their safety. Never attempt to alter the names of any font files. If you have a font management utility installed, please refer to its user's guide to determine if the instructions given here apply.

Macintosh PostScript, Macintosh TrueType and Windows formats are sold separately.

Click on a section below:

[Emigre Fonts User License](#)

[Installation Instructions](#)

[Character Set and Key Map](#)

### Contact:

Emigre, Inc., 4475 "D" Street, Sacramento, California 95819 USA (916) 451-4344 fax (916) 451-4351

email: [sales@emigre.com](mailto:sales@emigre.com)

Emigre Online: <http://www.emigre.com>

Font registration: <http://www.emigre.com/fontreg>

Copyright © 1990, 1998, Emigre Graphics. Emigre Fonts is a trademark of Emigre Graphics. Apple, Macintosh, LaserWriter, and Finder are trademarks of Apple Computer, Inc. PostScript is a trademark of Adobe Systems Incorporated. Windows is a trademark of Microsoft.

## Emigre Fonts User License

### You agree to the following user licensing terms:

1. This Emigre Fonts package is licensed for use on a single printer or output device in conjunction with a maximum of 5 CPUs or workstations.
2. A multi-device site license upgrade must be purchased for multiple device use according to the multi-device license schedule shown below. Each location and/or entity must purchase a separate license, starting with the first device. An output device is any printer, such as a Linotronic rasterizer, laser printer, or dot-matrix printer, any video display terminal or any other device where display is generated from the font software outlines, such as with the use of Adobe Type Manager, if the font is to be used primarily for display terminals that generate the output, as in a multimedia CD.
3. The contents of this Emigre Fonts package may not be copied or duplicated in any form except for backup purposes. Emigre Fonts software or documentation may not be rented, leased, sublicensed or lent to another person or entity.
4. Packages may not be returned or exchanged unless defective. Defective packages shall be replaced by the same package if accompanied with purchase receipt and Emigre is notified within one week of purchase.
5. Any software, EPS file, illustration, or anything derived from Emigre Fonts software must be used according to the original licensing terms. This means, for example, that any modified Emigre Font, or any outline information derived from any Emigre Font is still licensed for the same number of devices as the original and may not be sublicensed, given away, or sold without written permission from Emigre, Inc. Emigre is responsible for technical support of its officially distributed fonts only. Emigre is not responsible for modified and / or regenerated software. This license does not permit any form of embedding or encrypting of Emigre Fonts in digital documents or any other form. If embedding of Emigre Fonts is desired, the user must purchase an additional license from Emigre based upon usage. If an embedding license is desired, the licensee must represent and warrant that licensee's encryption of the embedded Emigre's Fonts is secure enough to prevent any access or use by anyone.
6. The user of this Emigre Fonts software agrees to credit Emigre as the trademark and copyright owner of the Emigre Fonts and list the font names, wherever and whenever design, production, or any other credits are shown.
7. Any violation by you of this agreement shall cause this license to be terminated. In the event of termination, and without limiting any other remedies which may be available against you, you must immediately return the font package to Emigre and certify that no copy remains in your, or anyone else's possession.
8. Emigre makes no warranties express or implied as to merchantability, fitness for a particular purpose, or otherwise. Without limiting the foregoing, Emigre shall in no event be liable for any direct, indirect, consequential, or incidental damages, including damages from loss of business profits, business interruption, loss of business information, arising out of the use or inability to use the product.

### Multi-device Upgrades

Multi-device site license upgrades are priced according to the schedule shown below. Each location and/or entity must purchase a separate license, starting with the first device. The following is cumulative:

2nd printer with up to 10 CPUs: add 50 percent of original price.

3rd to 10th printer with 11 to 50 CPUs: add 20 percent for each printer or per 5 CPUs.

11th to 25th printer with 51 to 125 CPUs: add 15 percent for each printer or per 5 CPUs.

26th to 50th printer with 126 to 250 CPUs: add 10 percent for each printer or per 5 CPUs.

51st printer and over with 251 CPUs and over: add 5 percent for each printer or per 5 CPUs.

If your usage exceeds the number of CPUs for a given output device category, you must purchase the upgrade with the applicable number of CPUs.

Each location and/or entity must purchase a separate license, starting with the first device. The upgrade price is calculated as a percentage of the original price of the package.

To help keep your font licensing current, we've provided a convenient form at: <http://www.emigre.com FontAudit.html>

Click on a section below:

**Registration**

**Installation Instructions**

**Character Set and Key Map**

## Installation Instructions

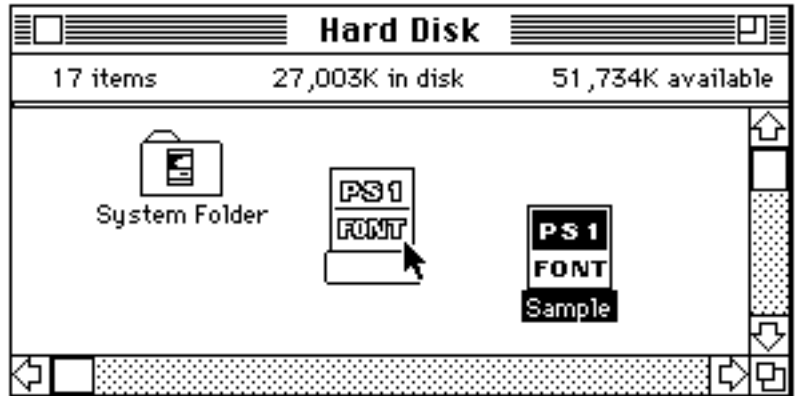
**Extracting:** Before installing, you will need to extract (or uncompress) any files with the “.sea” suffix.

File names ending with “.sea” indicate files which are provided in a self-extracting archive format. To begin self-extraction, simply “open” or double-click the file’s icon. A dialog box will appear asking you where you would like the uncompressed file(s). Select “Drive” and navigate to the appropriate folder or location; then click on the “Extract” button.

### Macintosh PostScript Type 1 installation: Drag the icons onto the System Folder.

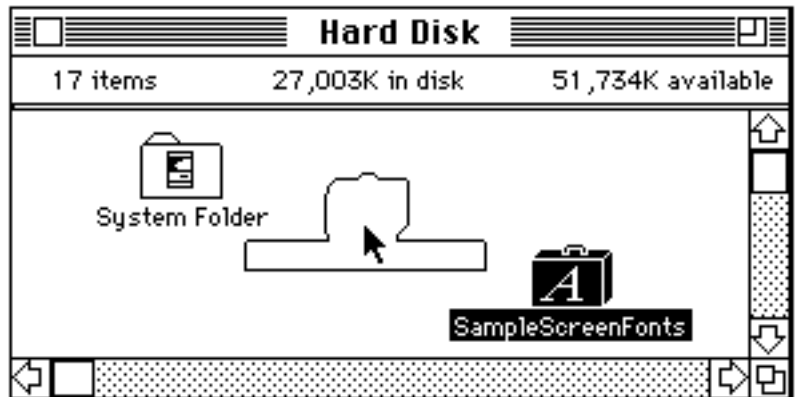


**PostScript Fonts:** PostScript Type 1 outline fonts are used for printing and for screen display with Adobe Type Manager (ATM). To install PostScript Type 1 fonts, select and drag both the PostScript and ScreenFont icons directly onto the System Folder; not the System file. (The Macintosh will tell you that it is going to put these files in their proper places.) In order to use the PostScript fonts, you must also install the corresponding screen fonts.



**Screen Fonts:** Also called bitmap fonts, screen fonts are used for screen display and dot-matrix printing. Drag the screen fonts icon directly onto the System Folder.

**AFM Files:** Some PostScript font packages also include AFM files which contain font metrics and kerning information. AFM files are generally not necessary for Macintosh font operation; consult your application manual for installation instructions.



### Macintosh TrueType and Screen Fonts installation: Drag the icons onto the System Folder.

(This installation is used for both screen fonts, as well as for TrueType fonts.)



**TrueType Fonts:** This is Apple’s outline font technology which was introduced with System 7. TrueType outline fonts are used for both screen display and printer output. Install the TrueType fonts by dragging the suitcase icon directly onto the System Folder; not the System file. (The Macintosh will tell you that it is going to put these files in their proper places.) Each Emigre TrueType suitcase contains both screen fonts and TrueType outline fonts, so installation is accomplished in one step.

Click on a section below:

[Registration](#)

[Emigre Fonts User License](#)

[Character Set and Key Map](#)

## Standard Character Set

This key map applies to Emigre's standard character set for text faces; some display fonts may have more limited character sets. If this font package includes special characters, illustrations, or small caps and fractions, please see the special characters on the following pages.

Please note that this character set is provided under the Macintosh operating system; some characters may not be available with other systems, such as Windows.

### Composite Characters

option - e	+	a	=	á
option - e	+	e	=	é
option - e	+	i	=	í
option - e	+	o	=	ó
option - e	+	u	=	ú
option - e	+	E	=	É
option - i	+	a	=	â
option - i	+	e	=	ê
option - i	+	i	=	î
option - i	+	o	=	ô
option - i	+	u	=	û
option - n	+	a	=	ã
option - n	+	n	=	ñ
option - n	+	o	=	õ
option - n	+	A	=	Ã
option - n	+	N	=	Ñ
option - n	+	O	=	Õ
option - u	+	a	=	ä
option - u	+	e	=	ë
option - u	+	i	=	ï
option - u	+	o	=	ö
option - u	+	u	=	ü
option - u	+	y	=	ÿ
option - u	+	A	=	Ä
option - u	+	O	=	Ö
option - u	+	U	=	Ü
option - `	+	a	=	à
option - `	+	e	=	è
option - `	+	i	=	ì
option - `	+	o	=	ò
option - `	+	u	=	ù
option - `	+	A	=	À

### Euro Symbol

option-shift-2

Starting with the 1999 releases, Emigre fonts will include the Euro symbol in the option-shift-2 key position.

For information about the Emigre Euro font, see:

[www.emigre.com/Euro.html](http://www.emigre.com/Euro.html)

Some Emigre fonts include both lining and old style figures in one font; the alternate numerals are accessed as follows.

### Alternate Numerals:

option-shift-1

option-shift-2

option-shift-3

option-shift-4

option-5

option-6

option-shift-7

option-shift-8

option-shift-9

option-shift-0

For design information about lining and old style figures, see: [www.emigre.com/EFoGC.html](http://www.emigre.com/EFoGC.html)

**Note:** if you have trouble printing these characters, make sure symbol font substitution is turned off in your application.

**NB space (non-breaking space):**

This character is equal in width to the regular space, but will not break words to a separate line.

KEY	CHAR	SHIFT	OPT.	OP-SH
A	a	A	å	Å
B	b	B		ı
C	c	C	ç	Ç
D	d	D		Î
E	e	E	,	,
F	f	F	f	ï
G	g	G	©	~
H	h	H	.	Ó
I	i	I		^
J	j	J		Ô
K	k	K	°	
L	l	L		Ò
M	m	M	μ	Â
N	n	N		~
O	o	O	ø	Ø
P	p	P		
Q	q	Q	œ	Œ
R	r	R	®	‰
S	s	S	ß	Í
T	t	T	†	˘
U	u	U	“	”
V	v	V		
W	w	W		”
X	x	X		
Y	y	Y	¥	Á
Z	z	Z		
1	1	!	ı	ALT 1
2	2	@	™	ALT 2
3	3	#	£	ALT 3
4	4	\$	¢	ALT 4
5	5	%		ALT 5 fi
6	6			ALT 6 fl
7	7	&	¶	ALT 7
8	8	*	•	ALT 8
9	9	(		ALT 9
0	0	)		ALT 0
,	,		,	
-	-	—	—	—
[	[	{	“	”
]	]	}	’	,
;	;	:	...	Ú
'	'	"	æ	Æ
,	,	<		—
.	.	>		˘
/	/	?		¿
SPACE BAR			NB SPACE	

Click on a section below:

[Registration](#)

[Emigre Fonts User License](#)

[Installation Instructions](#)

[Special Characters](#)

[Features](#)

## Special Characters

This key map applies to font specific special characters. For information about Emigre's standard character set, see the previous page. See the following pages for an alphabetical listing, usage suggestions and special features.

### Brothers Regular & Super Slant

#### Ligatures

**option-=** = ff ligature

**option-5** = ffi ligature

**shift-option-=** = ffl ligature

**option-p** = LA ligature (high cyma)

**option-b** = LA ligature (low cyma)

**option-x** = ch ligature

**option-j** = ck ligature

### Brothers Bold

#### Ligatures

**option-=** = ff ligature

**option-5** = ffi ligature

**shift-option-=** = ffl ligature

**option-p** = LA ligature (high cyma)

**option-b** = LA ligature (low cyma)

**option-/** = LA ligature (Alt - high cyma)

**shift-option-v** = LA lig (Alt - low cyma)

#### Note:

If you have trouble printing these characters, make sure symbol font substitution is turned off in your application.

(Also, this character set is provided under the Macintosh operating system; some characters may not be available with other systems, such as Windows.)

Click on a section below:

[Registration](#)

[Emigre Fonts User License](#)

[Installation Instructions](#)

[Standard Character Set](#)

[Features](#)

## Brothers Word Logos

a		AND	A		AND
b		AT	B		AT
c		CO_	C		Co_
d		CO_	D		Co_
e		NEW	E		NEW
f		FOR	F		FOR
g		PANEL RIGHT	G		PANEL LEFT
h		PANEL RIGHT	H		PANEL LEFT
i		INC_	I		Inc_
j		IN_	J		IN_
k		IN	K		IN
l		LTD_	L		Ltd_
m		NO_	M		NO_
n		No_	N		No_
o		OF	O		OF
p		ON	P		ON
q		ON_	Q		ON_
r		OR	R		OR
s		ST	S		ST
t		THE	T		THE
u		PANEL RIGHT	U		PANEL LEFT
v		VS	V		VS
w		WITH	W		WITH
x		No	X		No
y		TO	Y		TO
z		TO_	Z		TO_
`		CHECK LEFT	~		CHECK RIGHT
1		ST	!		ST
2		ND	@		ND
3		RD	#		RD
4		TH	\$		TH
5		CT	%		CT
6		AV	^		AV
7		LN	&		LN
8		PL	*		PL
9		DR	(		DR
0		P.O.	)		PANEL MIDDLE
-		SWASH	_		ORNAMENT LEFT
=		SWASH	+		ARROW LEFT
[		FEATHER LEFT	{		ARROW RIGHT
]		FEATHER RIGHT	}		ARROW SHAFT
\		ARROW SHAFT ALT			POINTER LEFT
;		POINTER LEFT	:		POINTER RIGHT
'		POINTER RIGHT	"		ARROW LEFT
,		BORDER LEFT	<		ARROW RIGHT
.		BORDER RIGHT	>		ORNAMENT RIGHT
/		BORDER MIDDLE	?		

## Features Brothers Alternates & Word Logos

### Arrows, Ornaments & Index Pointers

For best results, do not use tracking when setting arrows.

The following are located in the Brothers Word Logos font:



Customize the length of arrow shafts by adding the bar (|) character to the above arrow heads; use the alternate arrow shaft (\) when connecting index pointers:



Add feather ends to arrows with the bracket character:



Repeating the bracket character will extend the length of feather ends to accommodate reversed type; repeating the arrow ends will extend the arrow head:



### Panels



### Borders



### Superior Numerals

Superior numerals are located in the Brothers Alternates fonts. In the example below, 19 is set in the regular numerals (Brothers Bold font); the \$ and 99 are set in the superior numerals (Brothers Bold Alternates font); the underscore or equal key (Brothers Bold Alternates font) typed immediately following the 99 automatically positions itself under the superior numerals.

The far right example uses the superior decimal point; type option-shift-9 (Brothers Bold Alternates font).



Click on a section below:

[Registration](#)

[Emigre Fonts User License](#)

[Installation Instructions](#)

[Standard Character Set](#)

[Speical Characters](#)

## Alphabetic Listing of Word Logos

Locate the desired element on the right, then type the corresponding key shown on the left in each column. For those Word Logos which have more than one design, such as the "TO," an underscore following the Word Logo designates the underlined variety. (See the previous page for a key map showing the designs.)

a	AND (DAY)	X	No (DAY)
A	AND (NIGHT)	N	No_ (ALT)
{	ARROW LEFT (ALT)	X	No (NIGHT)
<	ARROW LEFT	o	OF (DAY)
}	ARROW RIGHT (ALT)	O	OF (NIGHT)
>	ARROW RIGHT	p	ON (DAY)
	ARROW SHAFT	q	ON_
\	ARROW SHAFT ALT	P	ON (NIGHT)
b	AT (DAY)	r	OR (DAY)
B	AT (NIGHT)	R	OR (NIGHT)
6	AV (DAY)	+	ORNAMENT LEFT
^	AV (NIGHT)	?	ORNAMENT RIGHT
,	BORDER LEFT	0	P.O. (DAY)
/	BORDER MIDDLE	G	PANEL LEFT
.	BORDER RIGHT	H	PANEL LEFT
`	CHECK LEFT	U	PANEL LEFT
~	CHECK RIGHT	)	PANEL MIDDLE
c	CO_	g	PANEL RIGHT
d	CO_ (ALT)	h	PANEL RIGHT
C	Co_	u	PANEL RIGHT
D	Co_ (ALT)	8	PL (DAY)
5	CT (DAY)	*	PL (NIGHT)
%	CT (NIGHT)	;	POINTER LEFT (DAY)
9	DR (DAY)	:	POINTER LEFT (NIGHT)
(	DR (NIGHT)	'	POINTER RIGHT (DAY)
[	FEATHER LEFT	"	POINTER RIGHT (NIGHT)
]	FEATHER RIGHT	3	RD (DAY)
f	FOR (DAY)	#	RD (NIGHT)
F	FOR (NIGHT)	\	SHORT SHAFT
j	IN_	1	ST (DAY)
k	IN (DAY)	!	ST (NIGHT)
K	IN (NIGHT)	-	SWASH
i	INC_	=	SWASH (ALT)
l	Inc_	4	TH (DAY)
7	LN (DAY)	\$	TH (NIGHT)
&	LN (NIGHT)	t	THE (DAY)
l	LTD_	T	THE (NIGHT)
L	Ltd_	y	TO (DAY)
2	ND (DAY)	z	TO_
@	ND (NIGHT)	Y	TO (NIGHT)
e	NEW (DAY)	v	VS (DAY)
E	NEW (NIGHT)	V	VS (NIGHT)
m	NO_	w	WITH (DAY)
n	No_	W	WITH (NIGHT)